



July 2009

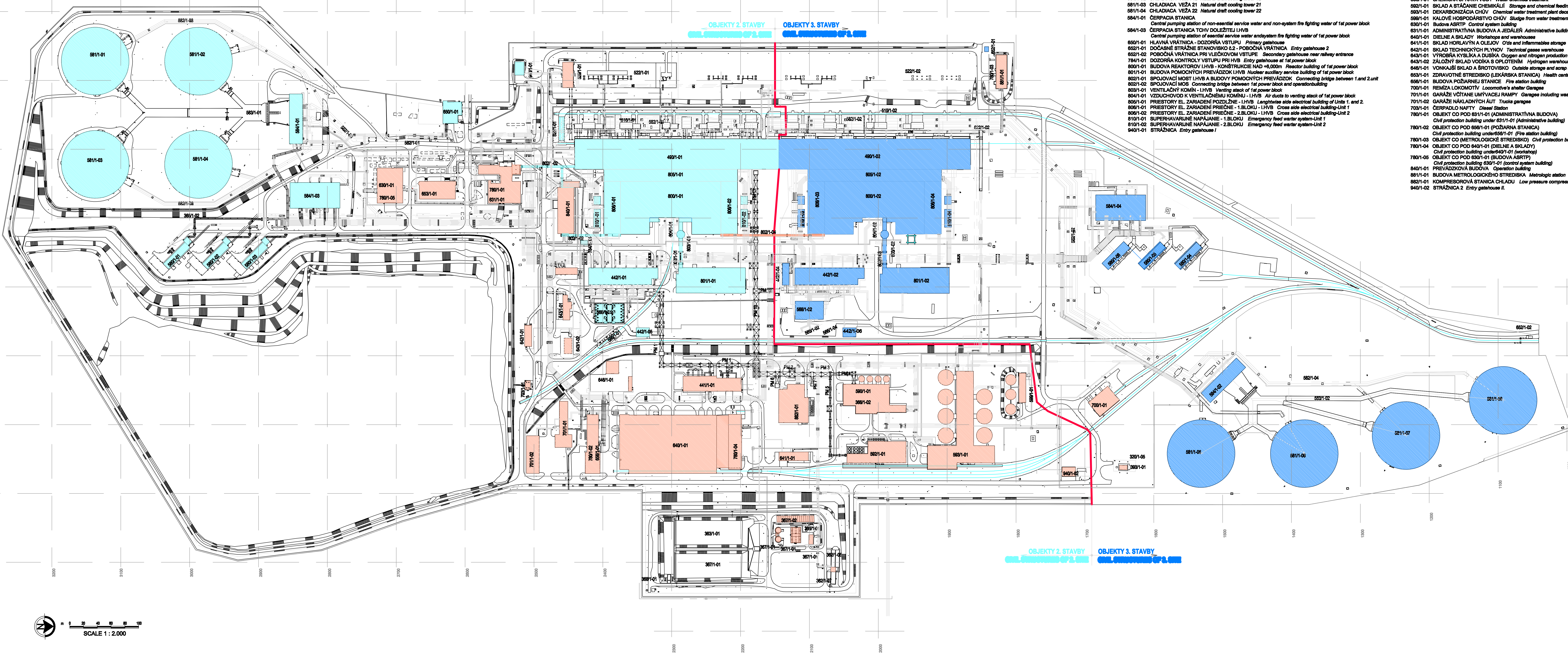
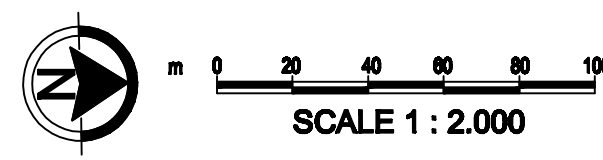
Maps

ANNEX 2



A world of
capabilities
delivered locally





LEGEND

OBJEKT 2. STAVBY - CIVIL STRUCTURES OF 2.SITE

- 442/1-01 DIESELGENERÁTOROVÁ STANICA 1.1 I.H.V.B. Diesel generator station of 1st power block
- 442/1-06 VYSOKOTLAKÁ KOMPRESOROVÁ STANICA 1.1 I.H.V.B. High pressure compressor station of 1st power block
- 442/1-05 BUDOVA OLEJOVÉHO HOSPODÁRSTVA DGS I.H.V.B.DGS (diesel generator station) lube oil system of 1st power block
- 480/1-01 STROJOVŇA I.H.V.B. Turbine hall of 1st power block
- 510/1-01 ZÁKLADY TRANSFORMÁTOROV S OLEJOVÝMI NÁDRŽAMI I.H.V.B. Transformers with oil tanks foundations of 1st power block
- 522/1-01 VONKÁŠIA ROZVODNÁ 110 A 400 kV I.H.V.B. 110 and 400 kV external substation of 1st power block
- 568/1-01 STÁČANIE NAFTY A OLEJA PRE DGS I.H.V.B. Diesel oil and oil discharging/tapping station of 1st power block
- 568/1-01 NAFTOVÉ HOSPODÁRSTVO I.H.V.B. Diesel oil system of 1st power block
- 580/1-01 CHLADIACA VENTILÁČNÁ VEŽA - I.BLOK, 2.DIVÍZIA Forced draft cooling tower I/1
- 580/1-02 CHLADIACA VENTILÁČNÁ VEŽA - I.BLOK, 2.DIVÍZIA Forced draft cooling tower I/2
- 581/1-01 CHLADIACA VEŽA 11 Natural draft cooling tower 11
- 581/1-02 CHLADIACA VEŽA 12 Natural draft cooling tower 12
- 581/1-03 CHLADIACA VEŽA 21 Natural draft cooling tower 21
- 581/1-04 CHLADIACA VEŽA 22 Natural draft cooling tower 22
- 584/1-01 CERPAČIA STANICA Central pumping station of non-essential service water and non-system fire fighting water of 1st power block
- 584/1-03 CERPAČIA STANICA TCHV DOLEŽITEJ I.H.V.B. Central pumping station of essential service water and system fire fighting water of 1st power block
- 650/1-01 HLAVNÁ VRÁTNICA - DOZORŇA VSTUPU Primary gatehouse
- 652/1-01 DOČASNÉ STRÁŽNE STANOVISKO 2 - POBOČNÁ VRÁTNICA Entry gatehouse 2
- 652/1-02 POBOČNÁ VRÁTNICA PRI VLEČKOVOM VSTUPE Secondary gatehouse near railway entrance
- 784/1-01 DOZORŇA KONTROLY VSTUPU PRI H.V.B. Entry gatehouse at 1st power block
- 800/1-01 BUDOVA REAKTOROV I.H.V.B. KONŠTRUKCIE NAD +6,000m Reactor building of 1st power block
- 801/1-01 BUDOVA POMOČNÝCH PREVÁDZOK I.H.V.B. Nuclear auxiliary service building of 1st power block
- 802/1-01 SPOJOVACÍ MOST I.H.V.B. A BUDOVY POMOČNÝCH PREVÁDZOK Connecting bridge between 1 and 2 unit
- 802/1-02 SPOJOVACÍ MOS Connecting bridge between 1st power block and operation building
- 803/1-01 VENTILÁČNY KOMÍN - I.H.V.B. Venting stack of 1st power block
- 804/1-01 VZDUCHOVOD K VENTILÁČNEMU KOMÍNU - I.H.V.B. Air ducts to venting stack of 1st power block
- 805/1-01 PRIESTORY EL. ZARIADENÍ POZDĺŽNE - I.H.V.B. Longitudinal side electrical building of Units 1, and 2
- 806/1-01 PRIESTORY EL. ZARIADENÍ PRIEČNE - 1.BLOK - I.H.V.B. Cross side electrical building - Unit 1
- 806/1-02 PRIESTORY EL. ZARIADENÍ PRIEČNE - 2.BLOK - I.H.V.B. Cross side electrical building - Unit 2
- 810/1-01 SUPERHAVARIJNÉ NAPÁJANIE - 1.BLOK Emergency feed water system - Unit 1
- 810/1-02 SUPERHAVARIJNÉ NAPÁJANIE - 2.BLOK Emergency feed water system - Unit 2
- 940/1-01 STRÁŽNICA Entry gatehouse I

OBJEKT 3. STAVBY - COMMON CIVIL STRUCTURES OF 2. AND 3.SITE

- 320/1-01 OPLIETENIE I. častí Fencing part I
- 362/1-06 AKUMULAČNÁ NÁDRŽ PRIEMYSELNEJ KANALIZÁCIE Industrial pipes leak tank
- 362/1-07 ODLIČOVAC OLEJA NA PRIEMYSELNEJ KANALIZÁCII Industrial pipes oil separator
- 363/1-01 POISTNÉ NÁDRŽE DAŽDOVEJ KANALIZÁCIE Rain water pipes tank
- 368/1-01 PREČERPÁVACIA STANICA SPLAŠKOVÝCH VOD Sewage pumping station
- 368/1-02 TLAKOVÁ FILTRÁCIA A CERPAČIA STANICA PRIEMYSELNEJ VODY Oil (contaminated water) pressur filtration
- 367/1-01 ČISTIACA STANICA ODPADNÝCH VOD A SPLAŠKOVEJ KANALIZÁCIE Sewage treatment
- 367/1-02 KALOVÉ POLIA V OČV SPLAŠKOVEJ KANALIZÁCIE Sewage decantation field
- 368/1-01 ZDRUŽENÝ OBJEKT MERANIA ODPADNÝCH VOD Final measuring station
- 363/1-01 REGULÁČNÁ STANICA PLYNU Civil works for pipes
- 510/1-03 Transformačný priestor Transformačný priestor
- 528/1-01 ÚSTREDNÁ ELEKTRICKÁ DOZORŇA Electrical main control room
- 560/1-01 CHEMICKÁ ÚPRAVA VODY Water chemical treatment
- 562/1-01 SKLAD A STÁČANIE CHEMIKÁLII Storage and chemical feeding system
- 563/1-01 DEKARBONIZÁCIA CHŮV Chemical water treatment plant decarbonization
- 568/1-01 KALOVÉ HOSPODÁRSTVO CHŮV Sludge from water treatment system
- 630/1-01 Budova ASRTT Control system building
- 631/1-01 ADMINISTRATÍVNA BUDOVA A JEDELEŇ Administrative building
- 640/1-01 DIELE A SKLADY Workshops and warehouses
- 641/1-01 SKLAD HORLAVÝN A OLEJOV Oils and inflammables storage
- 642/1-01 SKLAD TECHNICKÝCH PLYNOV Technical gases warehouse
- 643/1-01 VÝROBNÁ KYSLÍKA A DUSÍKA Oxygen and nitrogen production unit
- 643/1-02 ZÁLOŽNÝ SKLAD VODÍKA S OPLIETENÍM Hydrogen warehouse with fence
- 646/1-01 VONKÁŠNÝ SKLAD A SROTOVISKO Outside storage and scrap area
- 653/1-01 ZDRAVOTNÉ STREDISKO (LEKÁRSKA STANICA) Health center
- 658/1-01 BUDOVA POŽIARNEJ STANICE Fire station building
- 700/1-01 REMÍZA LOKOMOTÍV Locomotive's shelter Garages
- 701/1-02 GARÁŽE VČÍTANE UMYVACEJ RAMPY Garages including washing station
- 701/1-02 GARÁŽE NÁKLADNÝCH AUT Trucks garages
- 703/1-01 CERPADLO NAFTY Diesel Station
- 780/1-01 OBJEKT CO POD 631/1-01 (ADMINISTRATÍVNA BUDOVA) Civil protection building under 631/1-01 (Administrative building)
- 780/1-02 OBJEKT CO POD 658/1-01 (POŽIARNA STANICA) Civil protection building under 658/1-01 (Fire station building)
- 780/1-03 OBJEKT CO (METEOROLOGICKÉ STREDISKO) Civil protection building (meteo. station)
- 780/1-04 OBJEKT CO POD 640/1-01 (DIELE A SKLADY) Civil protection building under 640/1-01 (workshop)
- 780/1-05 OBJEKT CO POD 630/1-01 (BUDOVA ASRTT) Civil protection building 630/1-01 (control system building)
- 840/1-01 PREVÁDZKOVÁ BUDOVA Operation building
- 861/1-01 BUDOVA METEOROLOGICKÉHO STREDISKA Meteorologic station
- 862/1-01 KOMPRESOROVÁ STANICA CHLADU Low pressure compressed air station
- 940/1-02 STRÁŽNICA 2 Entry gatehouse II

OBJEKT 3. STAVBY - CIVIL STRUCTURES OF 3.SITE

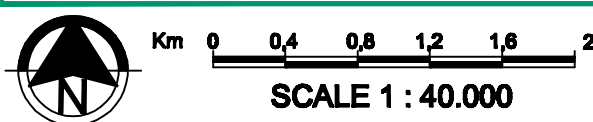
- 442/1-02 DIESELGENERÁTOROVÁ STANICA I.H.V.B. Diesel generator station of 2nd power block
- 442/1-04 VYSOKOTLAKÁ KOMPRESOROVÁ STANICA I.H.V.B. High pressure compressor station of 2nd power block
- 442/1-06 BUDOVA OLEJOVÉHO HOSPODÁRSTVA DGS I.H.V.B. DGS (diesel generator station) lube oil system of 2nd power block
- 480/1-02 STROJOVŇA I.H.V.B. Turbine hall of 2nd power block
- 510/1-02 ZÁKLADY TRANSFORMÁTOROV I.H.V.B. Transformers with oil tanks foundations of 2nd power block
- 522/1-02 VONKÁŠIA ROZVODNÁ 110 A 400 kV I.H.V.B. 110 and 400 kV external substation - of 2nd power block
- 568/1-02 STÁČANIE NAFTY A OLEJA Diesel oil and oil discharging/tapping station of 2nd power block
- 568/1-04 STÁČANIE OLEJA PRE DGS II. Diesel oil discharging/tapping station of 2nd power block
- 580/1-04 VENTILÁTOROVÁ CHLADIACA VEŽA I/1 Forced draft cooling tower I/1
- 580/1-05 VENTILÁTOROVÁ CHLADIACA VEŽA I/2 Forced draft cooling tower I/2
- 580/1-06 VENTILÁTOROVÁ CHLADIACA VEŽA I/3 Forced draft cooling tower I/3
- 581/1-05 CHLADIACA VEŽA 31 - INTERSONIC Natural draft cooling tower 31
- 581/1-06 CHLADIACA VEŽA 32 - INTERSONIC Natural draft cooling tower 32
- 581/1-07 CHLADIACA VEŽA 41 - INTERSONIC Natural draft cooling tower 41
- 581/1-08 CHLADIACA VEŽA 42 - INTERSONIC Natural draft cooling tower 42
- 584/1-02 CENTRÁLNA ČASŤ ČS TCHV NEDOLEŽITEJ A NEBÝSTÉMOVÉJ POŽ. VODY Central pumping station of non-essential service water and non-system fire fighting water of 2nd power block
- 584/1-04 ČS TCHV DOLEŽITÝCH SPOTREBÍČOV A SYSTÉMOVÉJ POŽIARNEJ VODY Central pumping station of essential service water and system fire fighting water of 2nd power block
- 800/1-02 BUDOVA REAKTOROV I.H.V.B. Reactor building of 2nd power block
- 801/1-02 BUDOVA POMOČNÝCH PREVÁDZOK I.H.V.B. Nuclear auxiliary service building of 2nd power block
- 802/1-03 SPOJOVACÍ MOST MEDZI I.H.V.B. A BAPP Bridge between 2nd power block and nuclear auxiliary service building
- 802/1-04 SPOJOVACÍ MOST MEDZI I.H.V.B. A II. H.V.B. Bridge between I. and II. H.V.B.
- 803/1-02 VENTILÁČNY KOMÍN II. H.V.B. Venting stack of 2nd power block
- 804/1-02 VZDUCHOVOD K VENTILÁČNEMU KOMÍNU II.H.V.B. Air ducts to venting stack of 2nd power block
- 805/1-02 PRIESTORY EL. ZARIADENÍ POZDĺŽNE - II.H.V.B. Longitudinal side electrical building of Units 3 and 4
- 806/1-03 PRIESTORY EL. ZARIADENÍ PRIEČNE - 3.BLOK Cross side electrical building - Unit 3
- 806/1-04 PRIESTORY EL. ZARIADENÍ PRIEČNE - 4.BLOK Cross side electrical building - Unit 4
- 810/1-03 SUPERHAVARIJNÉ NAPÁJANIE - 3.BLOK Emergency feed water system - Unit 3
- 810/1-04 SUPERHAVARIJNÉ NAPÁJANIE - 4.BLOK Emergency feed water system - Unit 4

HRANICA 2. A 3. STAVBY
BOUNDARY BETWEEN 2. AND 3. SITE

DESIGN FRAMEWORK
Site layout of NPP MOCHOVCE

Date: July 2009
Rev.: 0
Scale: 1:2.000

Map
1

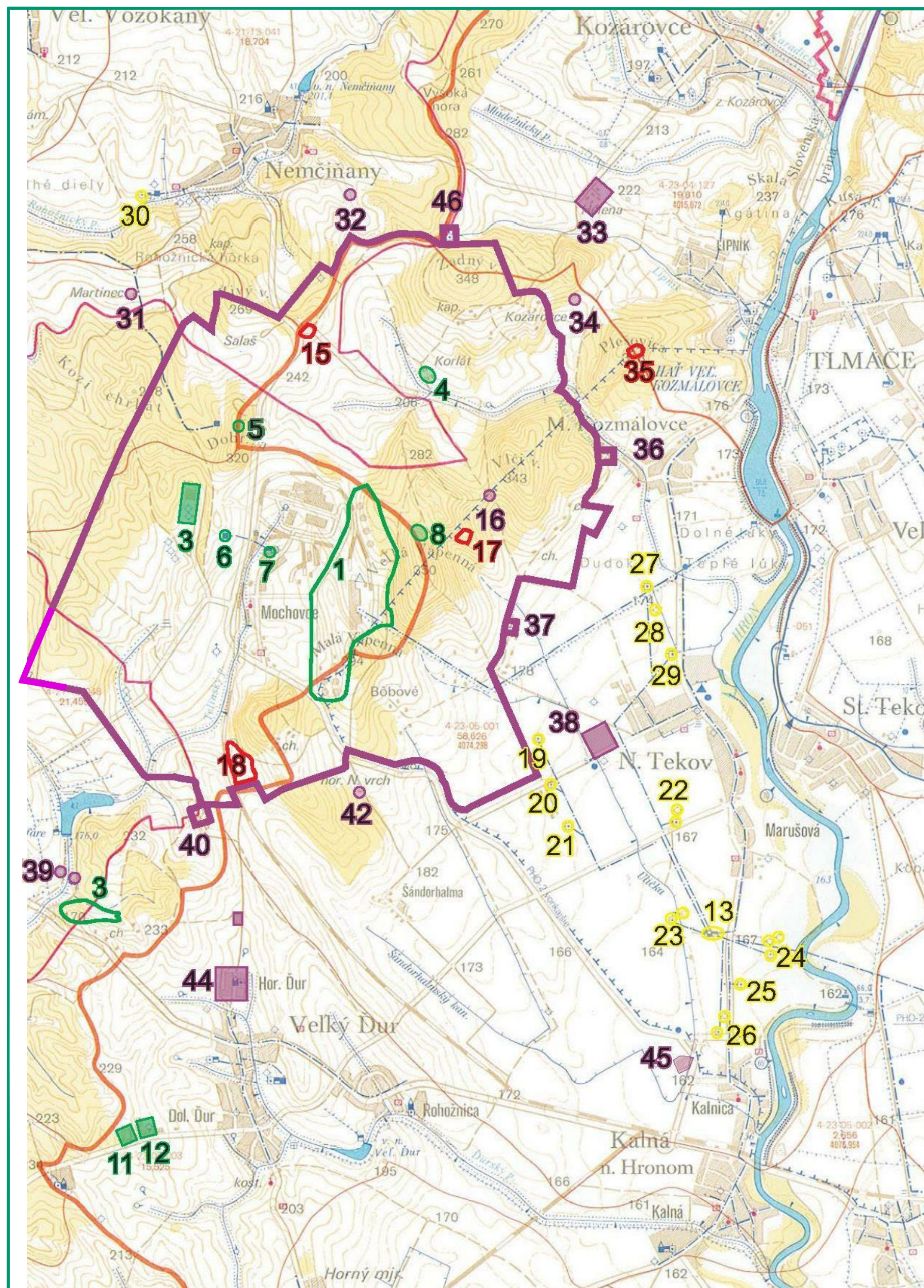


LEGEND

- **Mochovce NPP**
- Reinforced watercourse
- Aboveground pipeline
- Melioration canal
- Sewerage system culvert, waste
- Flow direction
- Kilometrage of the watercourse deducted from the map
- Kilometrage of the watercourse orientated to longitudinal profile (numbered every 5 km)
- Selected hydrogeological and other wells with record data on groundwater
- **HG - 7**
- Basic groundwater monitoring network object (SHMÚ) - in Quaternary sediment
- Groundwater object used by water mains company (borehole, well)
- Pumping station
- Reservoir
- Wastewater treatment plant
- Water treatment
- Main water mains pipeline
- Boundary of protection landscape area; protected area
- Small river catchment watershed
- ▲ Rainfall station with ombrograph
- ▲ Meteorological station with evaporation meter
- Protection barrier
- **Extraction point**
- A - River Hron Water Reservoir
- **Discharge point**
- B - River Hron after the water reservoir
- C - River Hron water reservoir for dry weather conditions
- D - Telinsky stream for treated sanitary wastewater coming from MO34
- E - Širočina stream for drainage water coming from drinking water treatment
- F - Telinsky for drainage water coming from Čifáre sludge bed

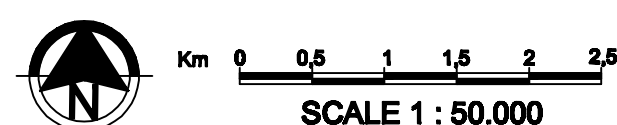
DESIGN FRAMEWORK

Hydrographic map and water supply and discharge facilities



LEGEND

- Areas owned or used by Mochovce NPP
 - Hygienic protection zone
 - Areas used by Mochovce NPP
 - Wells and drinking water pumping stations
 - Permanent dwellings, recreation facilities, farmyards or stock farms
 - Other buildings
- 1 Site of main building
 - 2 The former village of Mochovce
 - 3 RAW depository
 - 4 Korlát settlement
 - 5 Dobrica
 - 6 Drinking water reservoir for supply of building site
 - 7 Railway siding sluice
 - 8 Utility water reservoir fed from a pumping station on the Hron
 - 9 Utility water pumping station
 - 10 Settling pond of inactive sludge
 - 11 440 kV substation at Veľký Ďur
 - 12 110 kV substation at Veľký Ďur
 - 13 Back-up drinking water source
 - 14 Kalná nad Hronom railway station
 - 15 Meteorological station SHMÚ Bratislava
 - 16 Hunting cabin object 1
 - 17 Radio booster station mast (R-09 Veľká Vápenná)
 - 18 Solid waste municipal landfill under construction
 - 19 Drinking water station for supply of Levice
 - 20 Drinking water pumping station well for water mains supply
 - 21 Inhabited hamlet Martinec
 - 22 Inhabited lodge - PD Nemčinany
 - 23 Farmyard - PD Kozárovce
 - 24 Inhabited hamlet Kabát
 - 25 Television booster station mast
 - 26 Wine cellar - PD Kalná nad Hronom
 - 27 Ranch Nový Tekov
 - 28 Farmyard PD - Nový Tekov
 - 29 Hunting cabin
 - 30 Ruins of uninhabited hamlet Chladov
 - 31 Ruins of uninhabited hamlet Galiba
 - 32 Inhabited gamekeeper lodge - Nový vrch
 - 33 Municipal waste landfill - Nový Tekov
 - 34 Farmyard - PD Veľký Ďur
 - 35 Farmyard - PD Kalná nad Hronom
 - 36 Beekeeper cabin



Source:
- Hygienic protection zones pursuant to the Decision of the regional hygiene authorities No. H-IV-2370/79 from 15/10/1979; scale M = 1 : 10.000



A world of capabilities delivered locally

ASSESSMENT METHODOLOGY

Protection zones

Date: July 2009
Rev.: 0
Scale: 1:50.000

